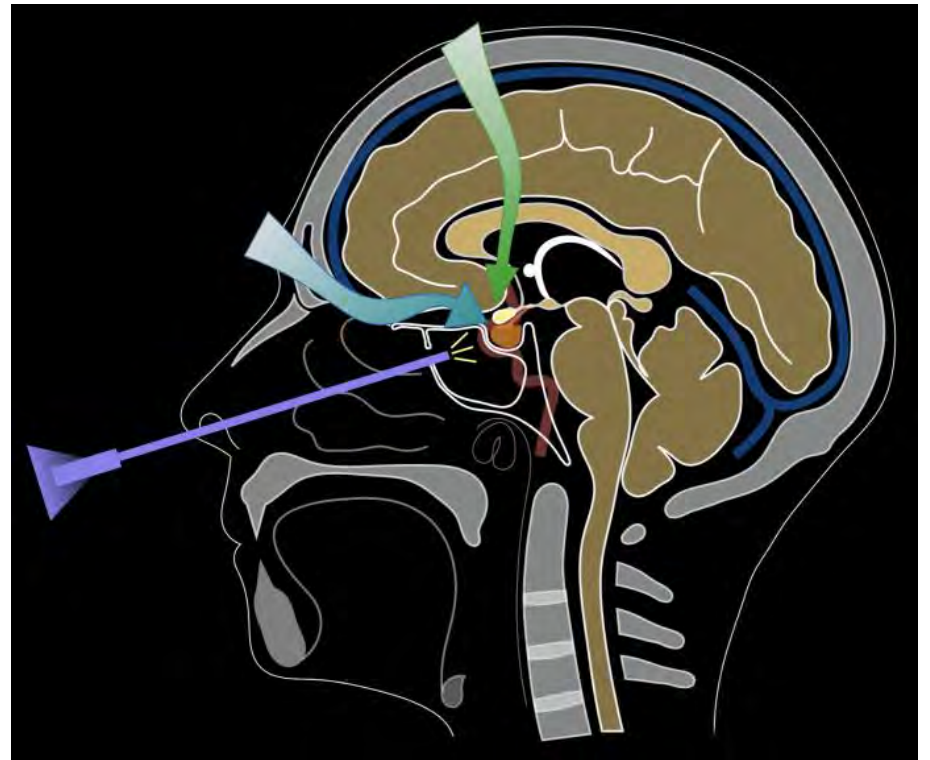


# Lyon's Pituitary

Fourth Edition

An International  
Multidisciplinary Course

April 1-3 2026  
Lyon, France



## Courses directors

**E JOUANNEAU**

Pituitary and Skull Base Neurosurgical Department Lyon,  
France

**H DUFOUR**, Marseille, France

**B BAUSSART**, Paris, France

**G RAVEROT, C SERGEANT** Endocrinologists, Lyon,  
France

## Local organization Committee

**T JACQUESSON**

**R MANET**

**E SIMON**



TRANSFORMED FROM ISGNE SINCE 2001

International  
Federation  
of Neuroendoscopy



THE EUROPEAN ASSOCIATION  
OF NEUROSURGICAL SOCIETIES

# Faculties

## Organizer

**E JOUANNEAU (Lyon, France)**

## Course Directors

**H DUFOUR (Marseille, FRANCE)**

**B BAUSSART (Paris, FRANCE)**

## Endocrinology

**G RAVEROT, C SERGEANT (Lyon, FRANCE)**

## Faculties

**M BRUNEAU, (Bruxelles, BELGIUM)**

**JC FERNANDEZ-MIRANDA (Stanford, USA)**

**P CAPPABIANCA (Naples, ITALY)**

**L CAVALLO (Naples, ITALY)**

**L FEUVRET (Lyon, FRANCE)**

**S FROELICH (Paris, FRANCE)**

**D MAZZATENTA (Bologna, ITALY)**

**T MELING (Copenhagen, DENMARK)**

**M MESSERER (Lausanne, SWITZERLAND)**

**H NISHIOKA (Tokyo, JAPAN)**

**R PRIETO (Madrid, SPAIN)**

**G REUTER (Liège, BELGIUM)**

**H SCHROEDER, (Greifswald, GERMANY)**

**A SZATHMARI (Lyon, FRANCE)**

**D SCAVARDA (Marseille, FRANCE)**

## Local Organizing Committee :

**T JACQUESSON**

**R MANET**

**E SIMON**

## Lab staff :

**V NIRDE**

**S BOUCHEZ**

**S AIT CHALAL**

## Nurse volunteer:

**N LOZAC'HMEUR**

**Dear friends and colleagues,**

**It is my great pleasure to invite you, both participants and faculties, for the fourth EANS - SFNC Masterclass and Hands-On Course focused on Pituitary Tumors. The course will take place in the modern facilities either of the University Campus and the Neurological Hospital of Lyon, France.**

**This course is intended for younger neurosurgeons, dealing with the basic and fundamental principles of operative procedures (endoscopes, microscopes etc), and endocrine management of such tumors.**

**Our goal is to teach the modern management of Pituitary Adenomas or Craniopharyngiomas which represent an over-speciality in Neurosurgery, nowadays.**

**Theoretical background will be provided in separate lectures by our distinguished faculty, prestigious European pituitary surgeons.**

**Lyon is a pleasant city to live in and to visit. It has a rich history, numerous museums and a well-known history of culinary school.**

**I am sure that you will have enough opportunities during the course to feel the Lyon hospitality.**

**I am looking forward to meeting you all in Lyon!**

**Emmanuel JOUANNEAU, MD, PhD  
Course Director**



# Scientific Programme

April, Wednesday 1 2026

10.00 am	Registration & Welcome <b>E JOUANNEAU</b> <i>Anatomical laboratory</i>
10.20 – 11.00	- Lecture - Pituitary Surgery History <b>E JOUANNEAU: 15'</b> - Lecture- Anatomy of Sellar and Parasellar locations <b>T JACQUESSON : Basis surgical anatomy 15'</b>
11.00 – 1.00 pm	<i>Lectures - Pituitary surgery 15'</i> - Sellar and Pituitary Surgery (macroadenoma) <b>H DUFOUR: tips and tricks</b> - Sellar and Pituitary Surgery (microadenoma) <b>B BAUSSART : the example of cushing surgical management</b> - Suprasellar Extended Approaches <b>L CAVALLO</b> - Others extended Approaches <b>D MAZZATENTA : parasellar, endonasal</b> <b>E JOUANNEAU: Transorbital</b> - Giant Adenomas <b>M MESSERER: EANS Guidelines</b> <b>H NISHIOKA : combined approaches</b>
1.00 - 2.00 pm	Lunch
2.00 - 6.00 pm	Laboratory Training - endonasal approaches

April, Thursday 2 2026

8.00 - 10.30 am	<p>Live surgery: Pituitary cases</p> <p>E JOUANNEAU - R MANET</p>
10.30 – 1.00 pm	<p>Lectures</p> <p>- Update on management of PitNets</p> <p>G RAVEROT, C SERGEANT 45'</p> <p>- Radiotherapy and radiosurgery for PitNets</p> <p>L FEUVRET - E SIMON 20'</p> <p>- Peculiarities of Pediatric Cases</p> <p>A SZATHMARI - D SCAVARDA 20'</p> <p>- Cases discussion</p> <p>R MANET: ALL PARTICIPANTS 30'</p>
1.00 - 2.00 pm	<p>Lunch</p>
2.00 - 6.00 pm	<p>Laboratory training - Endonasal - transorbital approaches</p>

April, Friday 3 2026

8.00 - 09.30 am Pituitary Adenomas - Craniopharyngiomas video  
*E JOUANNEAU, R MANET*

10.00 – 1.00 pm Updates on Craniopharyngiomas

- Endocrinological management

*C SERGEANT, G RAVEROT*

- Imaging Diagnosis and classification

*M MESSERER*

- Surgery:

- Nasal indications

*L CAVALLO*

- Cranial indications/Interhemispheric approach

*H DUFOUR/ M BRUNEAU*

- Intraventricular CPs management :

*H SCHROEDER*

- Pediatric specificities :

*A SZATHMARI - D SCAVARDA*

- Therapeutic Strategies in Adults:

Targeted Therapy, radiotherapy, surgery

*L FEUVRET*

*E JOUANNEAU*

- Cases discussion

1.00 - 2.00 pm Lunch

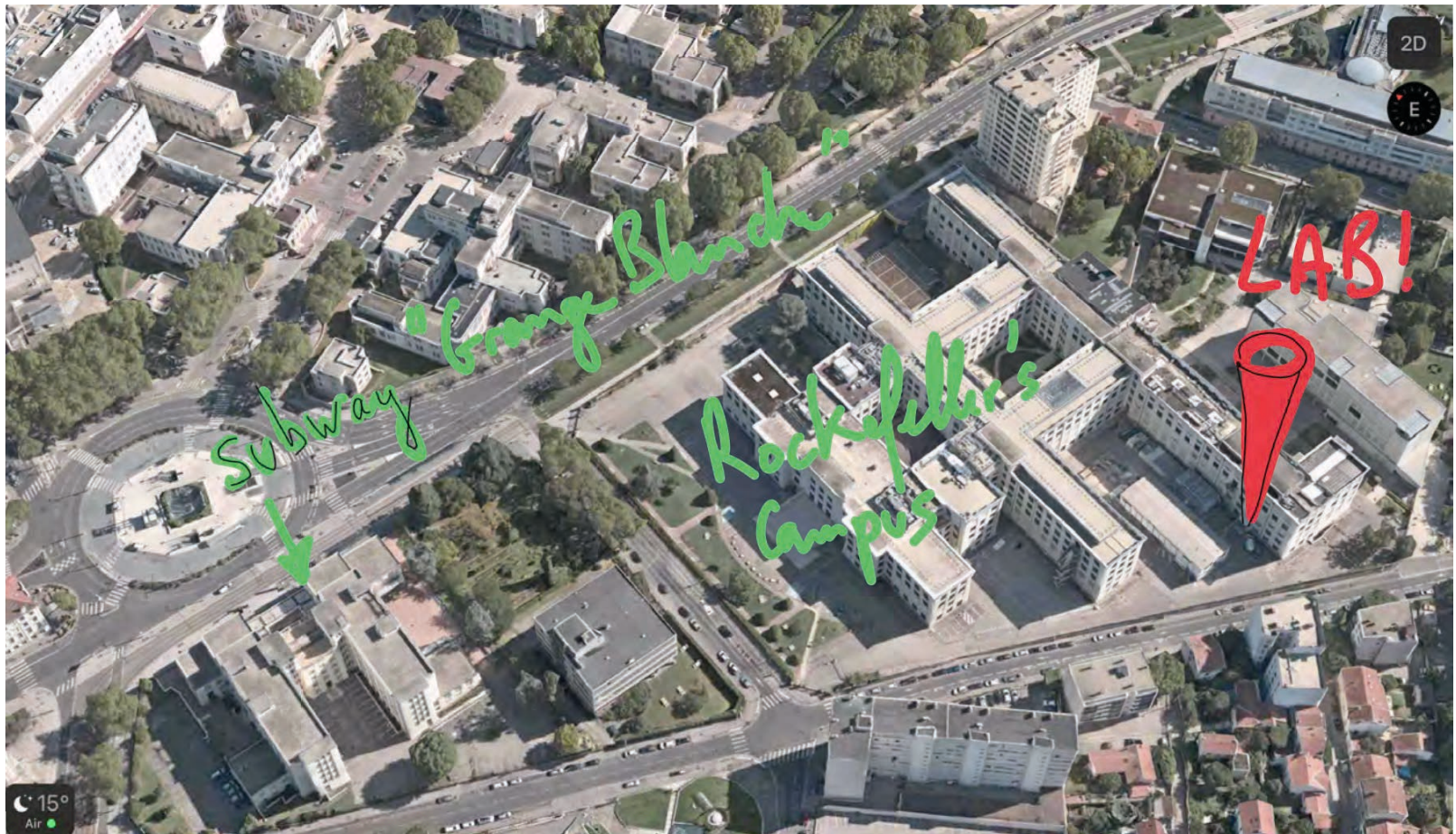
2.00 - 5.00 pm Laboratory Training - **cranial approaches**

5.00 pm Wrap-up



## PRACTICAL INFORMATION

### VENUE



All sessions will be held at the:

Département Universitaire d'Anatomie, Faculté de Médecine  
Lyon Est, 8 avenue Rockefeller, 69373 Lyon Cedex 08

Directions Metro ligne D «Grange-Blanche», then walk 5 min  
to the «Faculté de Médecine Lyon Est».

The anatomic lab is on 1st floor, at the far end of the corridor  
on the right. The course will be signposted from the main  
entrance of the university.

- 1100 euros per student (10% discount for EANS candidates)

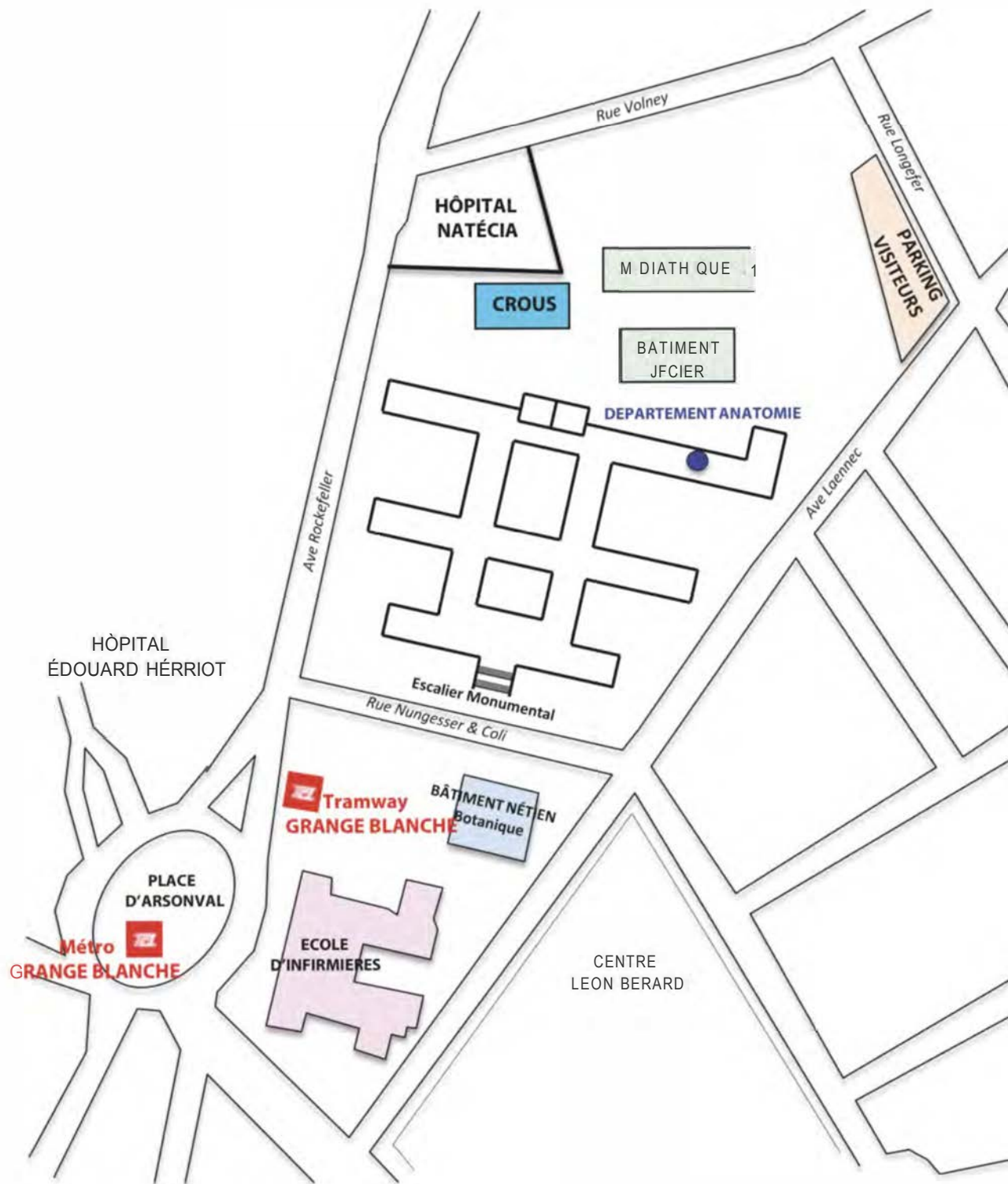
### PRACTICAL INFORMATION

[natalie.ruxton@mcocongres.com](mailto:natalie.ruxton@mcocongres.com)

The on-site staff can be reach using mails:  
[secretariat.laboratoire-anatomie@univ-lyon1.fr](mailto:secretariat.laboratoire-anatomie@univ-lyon1.fr)  
[emmanuel.jouanneau@chu-lyon.fr](mailto:emmanuel.jouanneau@chu-lyon.fr)  
Emergency number in France: 112

- Included in fees: on site coffee breaks, Lunches (university cafeteria)

- Excluded from fees: travels and accommodations (proposals are made on the website)





**We acknowledge the support of :**

**Integra**

**Baxter**

**Stryker**

**Arthrex**

**Climdal U**

**Medtronic**

**Zeiss**

***Baxter***

